

Deinstitutionalisation in Finland

Antti Teittinen & Hannu Vesala
FAIDD

Aim of the presentation

- To trace the social history of deinstitutionalisation of people with ID
- To analyse deinstitutionalisation in the context of welfare history in Finland
- To analyse contemporary deinstitutionalisation policy in the context of changing welfare-society

Services for people with ID in Finland: A brief history

In Finland there are approximately 30 000 people with ID

First institutions for people with ID were established at beginning of 1900.

“Mental deficiency law” 1958: Institutional care as main form of services

Committee 1959: Finland was divided to 15 special care districts, each running an institution; the need for new places for 4 400 people with ID.

1960's and 1970's:

the building of new institutions, last institutions were completed in 1979

Situation in 1960:

Institutions for people with ID: 2000 people with ID

Institutions for mentally ill and for elderly people: 4000 people with ID

Situation in 1979:

Institutions for people with ID: 6000 people with ID

Institutions for mentally ill and for elderly people: 3000 people with ID

Community residencies 900 people with ID

Institutions: a final solution?

Criticism against institutional care in 1970's: normalization & integration, rights and individual needs.

New law in 1978: primacy on normal health and social services; community living instead of institutional care.

Committee 1992: the number of people with ID should be lowered to half by the year 2000.

First community residencies (group homes) were established in the middle of 1970's,

Situation at the end of 1980's:

Institutions for people with ID:	5500 people with ID
Institutions for mentally ill and for elderly people:	1000 people with ID
Community residencies	3500 people with ID

1990's: decline in the number of people living in institutions

Organization of the services was no longer strictly controlled by state;
municipalities got the freedom to decide how to organize services

Economical depression

Situation at the end of 1990's:

Institutions for people with ID:

3000 people with ID

Community residencies

5500 people with ID

2000's: closing institutions?

First institution (Nastola) was closed in 1987.

In 2000's two institutions has been closed, and there are plans for closing two more institutions.

Situation in 2006:

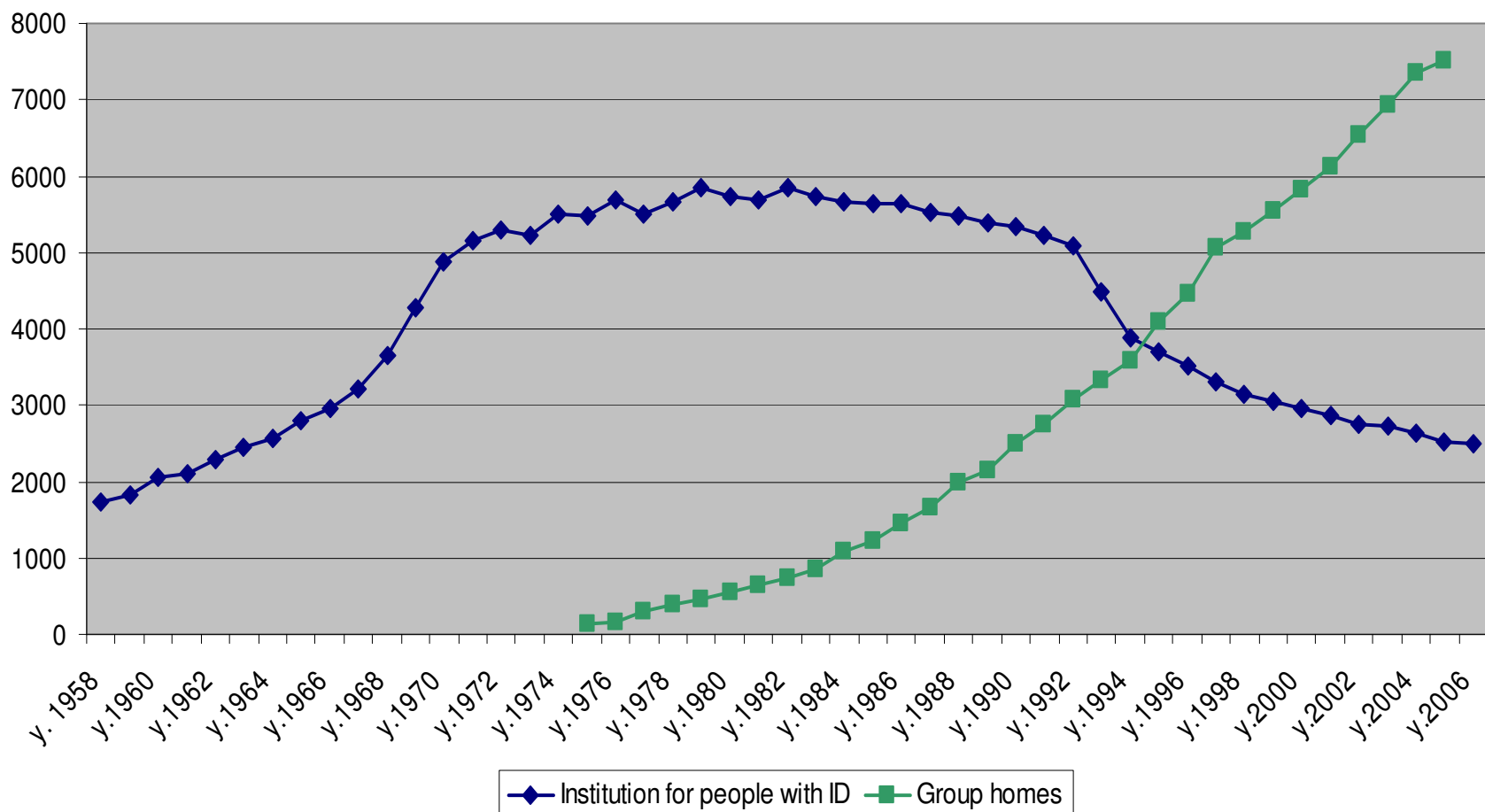
Institutions for people with ID:

2 300 people with ID

Community residencies

8 000 people with ID

The development of services for people with ID in Finland: numbers of people living in institutions and group homes



Future:

Municipalities and special care districts are making the decisions ->

Much variation: although decline in the number of people living in institutions will continue and some institutions will be totally closed, there are no plans for closing all institutions.

How will the residential services develop?

- More individual solutions, own apartments?

or

- Mini-institutions?

Three ages of deinstitutionalisation in Finland

- Judeo-Christian tradition to protect disadvantage people (1900-1945)
 - Disability is God's punishment
 - Church social work
 - Moralistic approach
- Planned economy and normative tradition (1945-1990)
 - Golden age of institutions
 - Normative social policy is a solution to the social threath of abnormality
 - Objective approach

Continues...

- New Public Management (1990-)
 - Emphasise individuality, people with ID as citizens, clients, customers and consumers
 - Re-organising institutional structures at governmental and service levels → managerialism
 - Reproduction of control practices, moralistic and service-oriented starting points
 - Increasing and specifying of diagnostics

Conclusions

- Poor preparations to move out of institutions to individual housing
- Lack of supportive services or mini-institutions
- Authorities have main initiatives of deinstitutionalisation
- Powerless voice and influence of service users
- Financial politics vs. human & civil rights?